

SPECIFICHE

Soffione a snodo (Inox)

Cromo lucido

Spessore 2 mm

Dimensione  $\varnothing$  250 mm

Getto pioggia

Sistema anticalcare

Imballo: 31 x 33 x 5,5 cm / 0,005626 m<sup>3</sup> / 1,062 kg

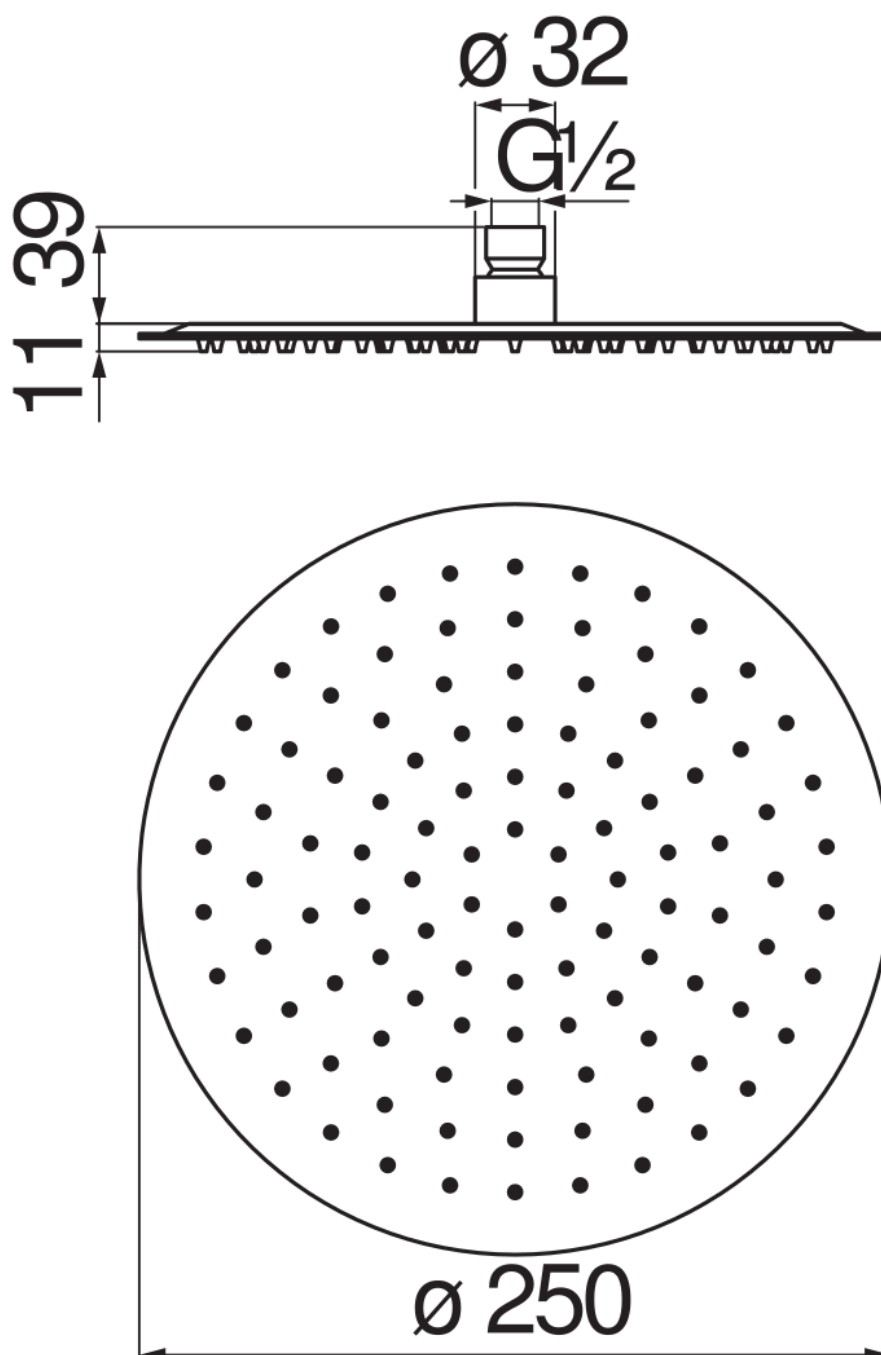
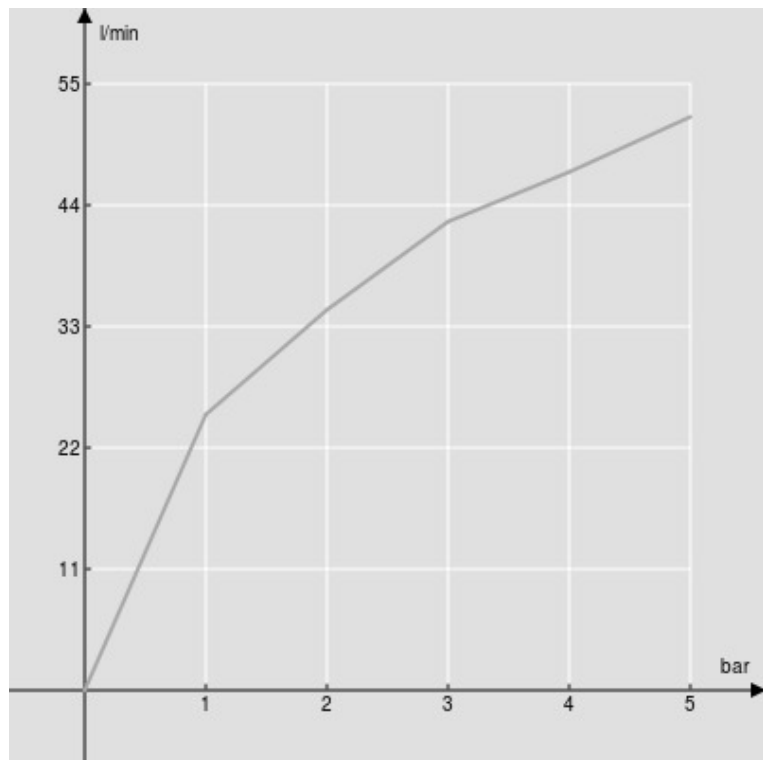


DIAGRAMMA DI PORTATA: ACQUA CALDA/FREDDA



— Getto pioggia